

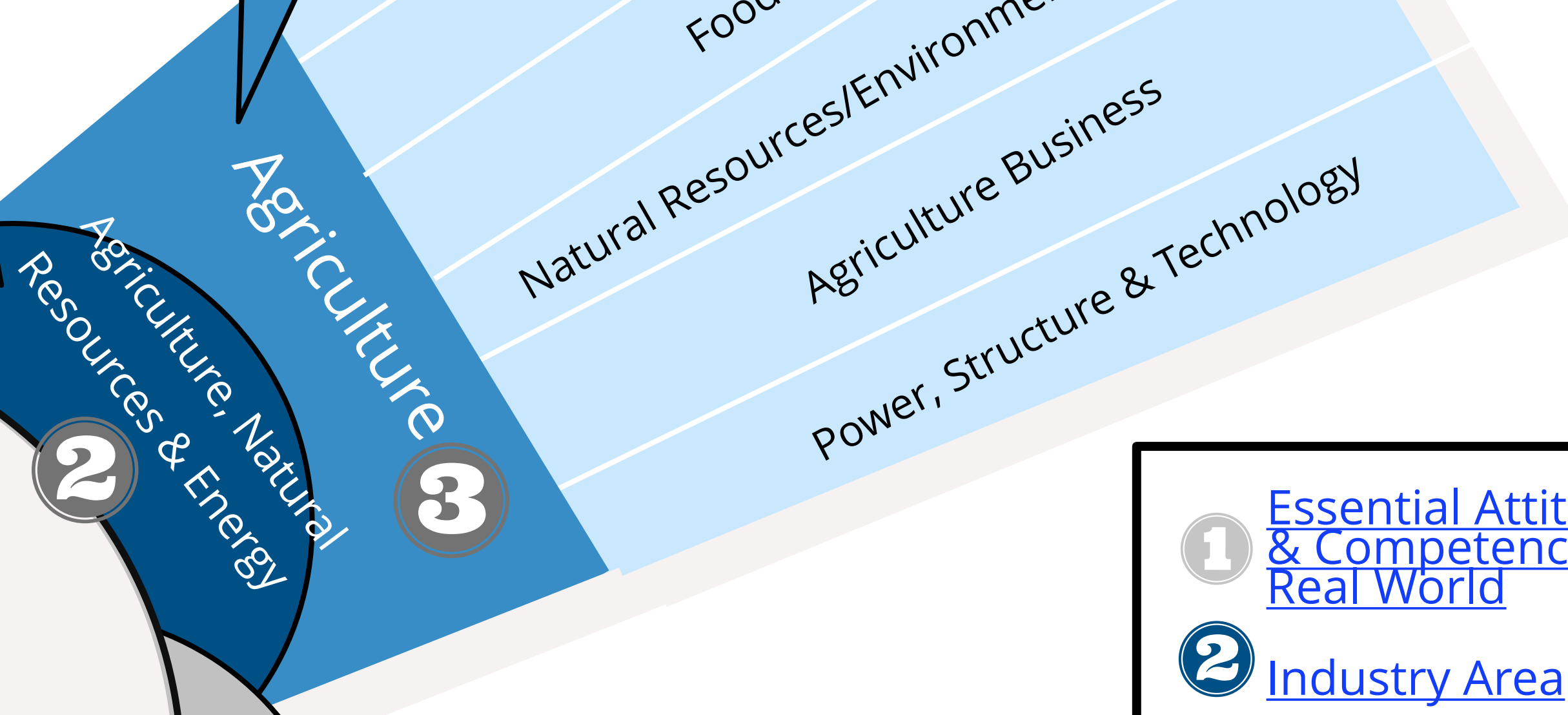
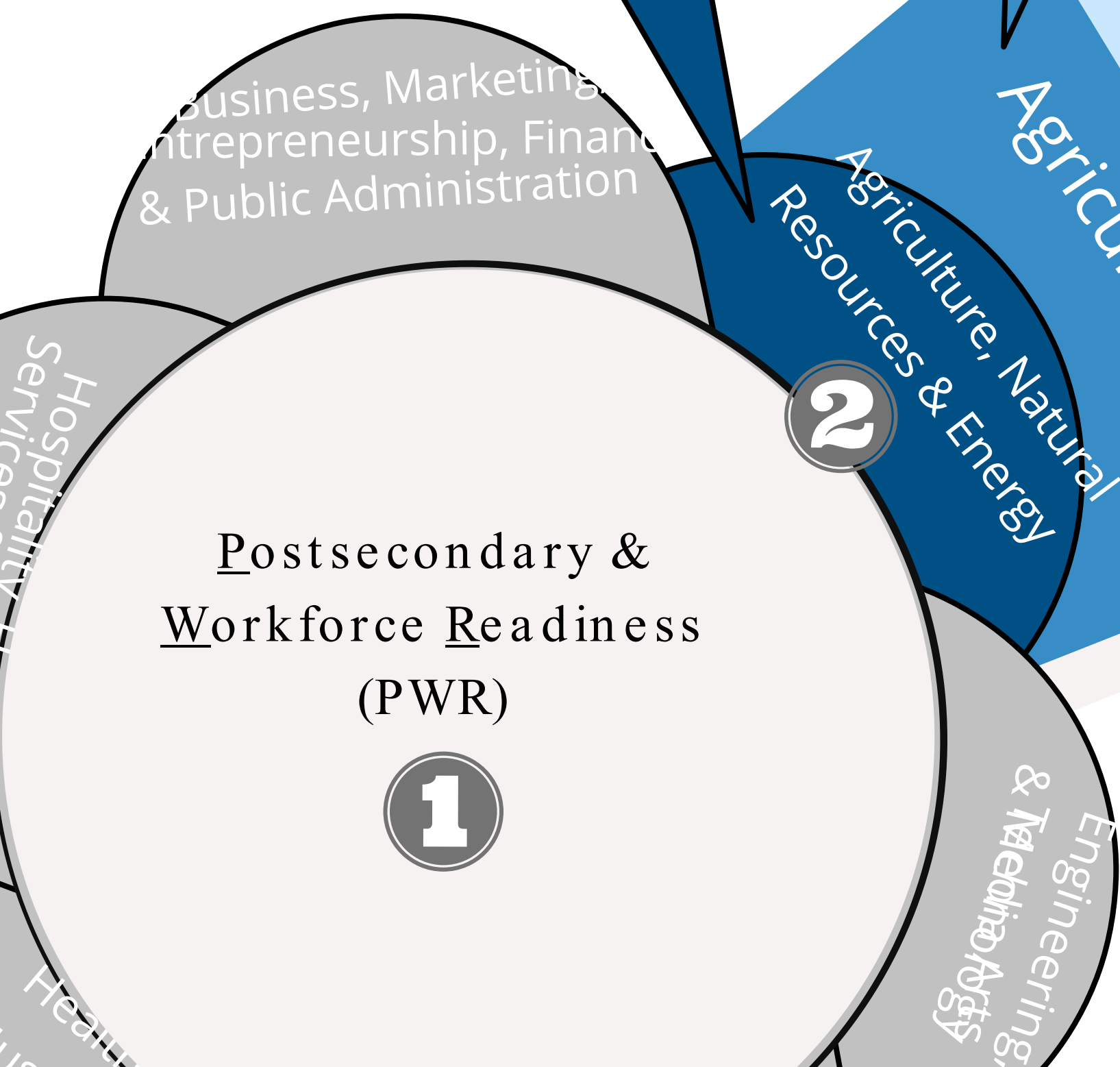
*includes Drafting & Design
**includes Aviation

Industry Area
Employment options to explore that are in high demand for a thriving Colorado economy.

Career Cluster
A way to group common skills into one category. When students identify with a cluster area, it helps plan courses, classes and future options.

Career Pathways
A way to show the path to complete a program, sequence of courses, in-school and out-of-school experiences, Work Based Learning and navigate life after high school.

Program of Study
A map to help students design their futures, know the sequences of courses to be intentional about building their class schedules, learn what next steps and what options exist during and after high school for thoughtful postsecondary and workforce readiness.



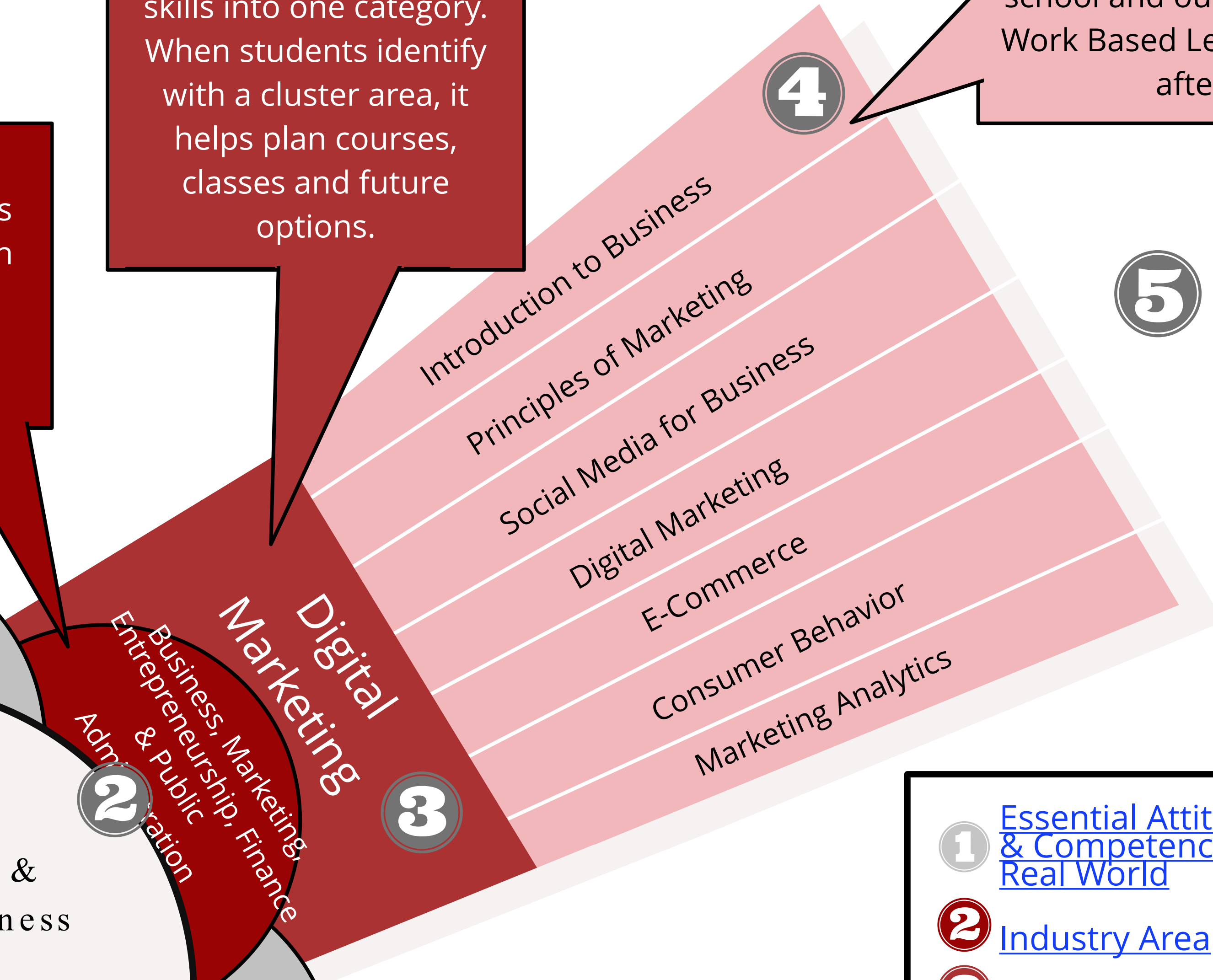
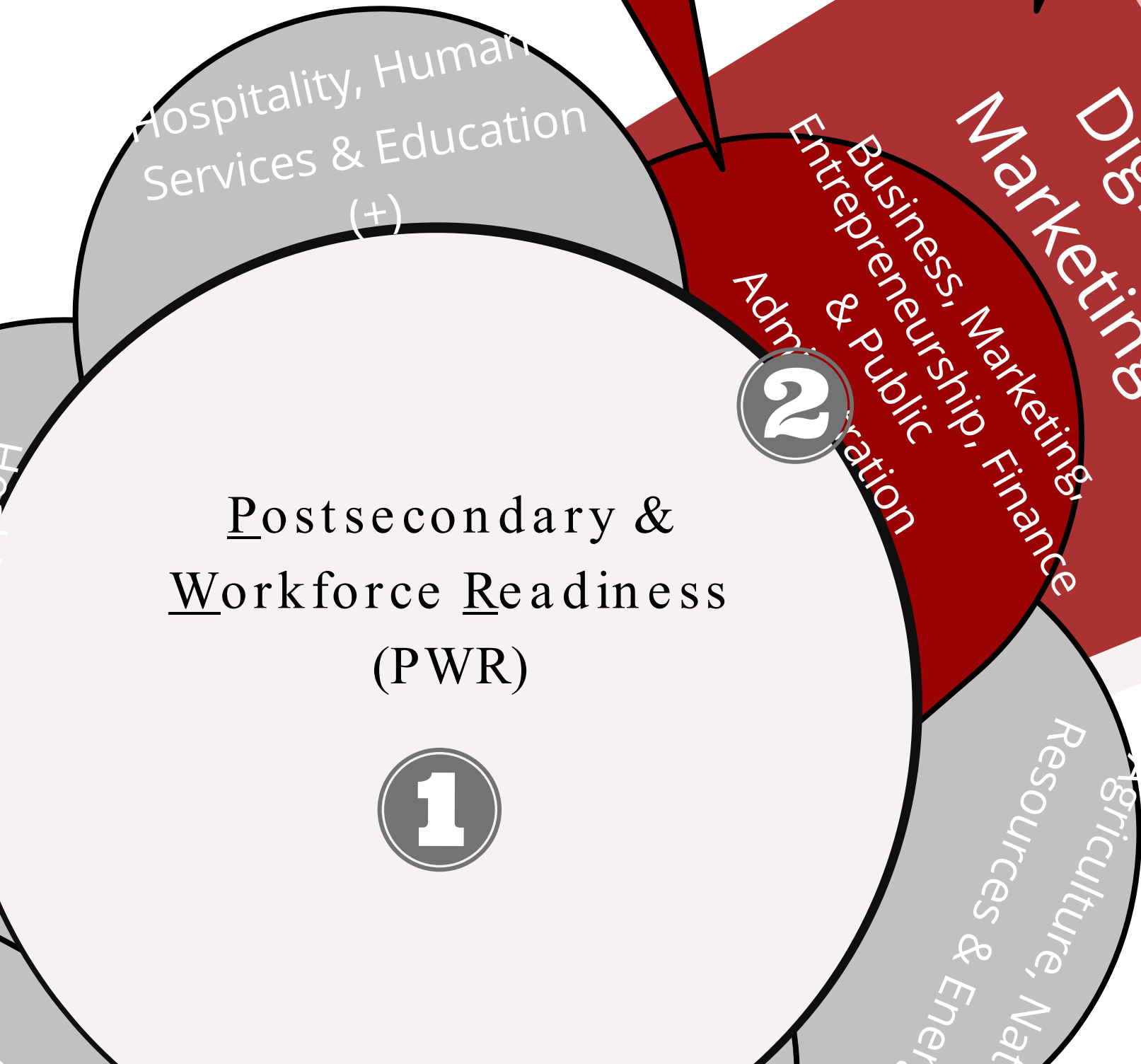
- 1 [Essential Attitudes, Skills, Knowledge & Competencies for Success in the Real World](#)
- 2 [Industry Area](#)
- 3 [Career Cluster](#)
- 4 [Career Pathways](#)
- 5 [Programs of Study](#)

Industry Area
Employment options to explore that are in high demand for a thriving Colorado economy.

Career Cluster
A way to group common skills into one category. When students identify with a cluster area, it helps plan courses, classes and future options.

Career Pathways
A way to show the path to complete a program, sequence of courses, in-school and out-of-school experiences, Work Based Learning and navigate life after high school.

Program of Study
A map to help students design their futures, know the sequences of courses to be intentional about building their class schedules, learn what next steps and what options exist during and after high school for thoughtful postsecondary and workforce readiness.



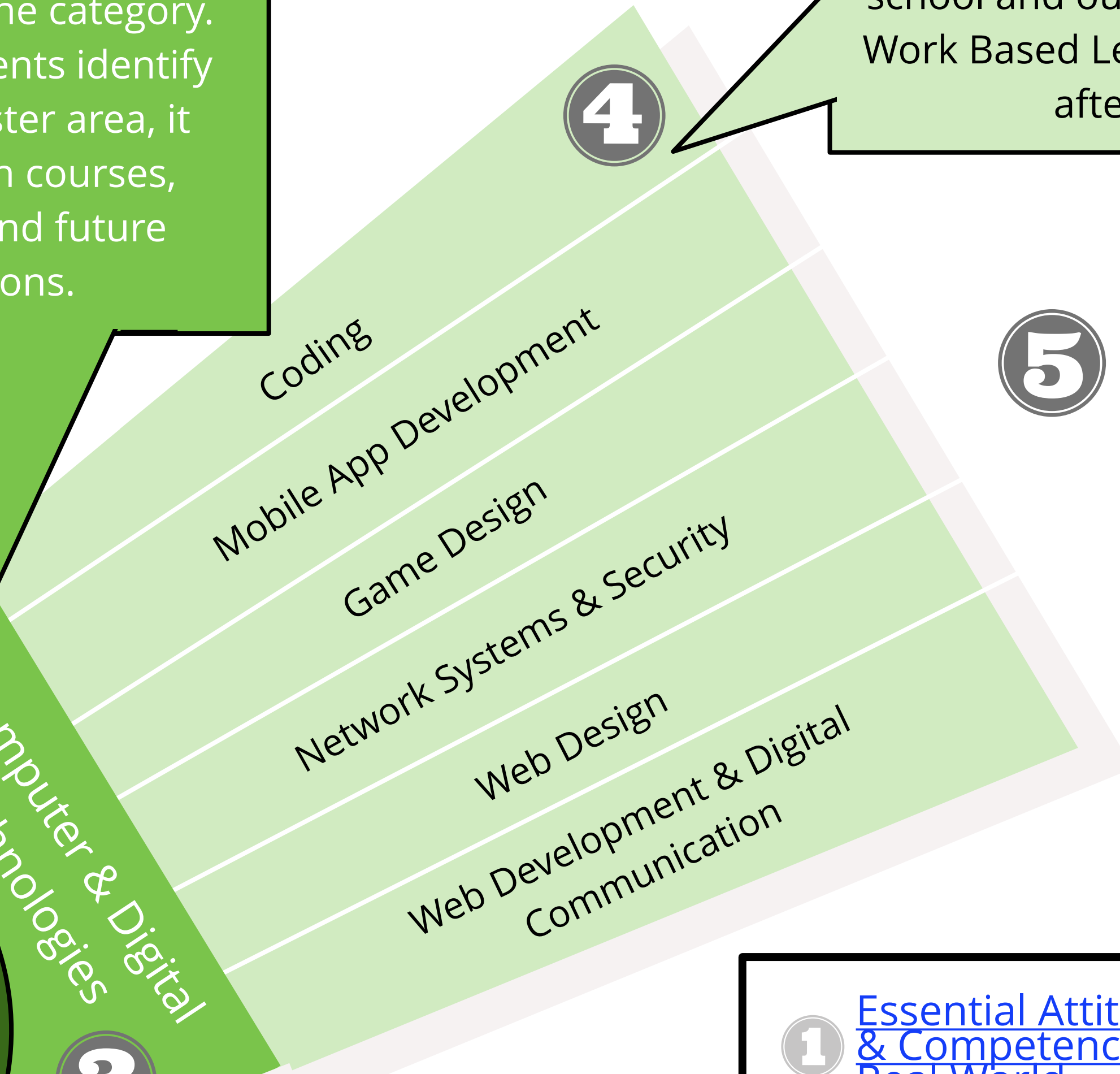
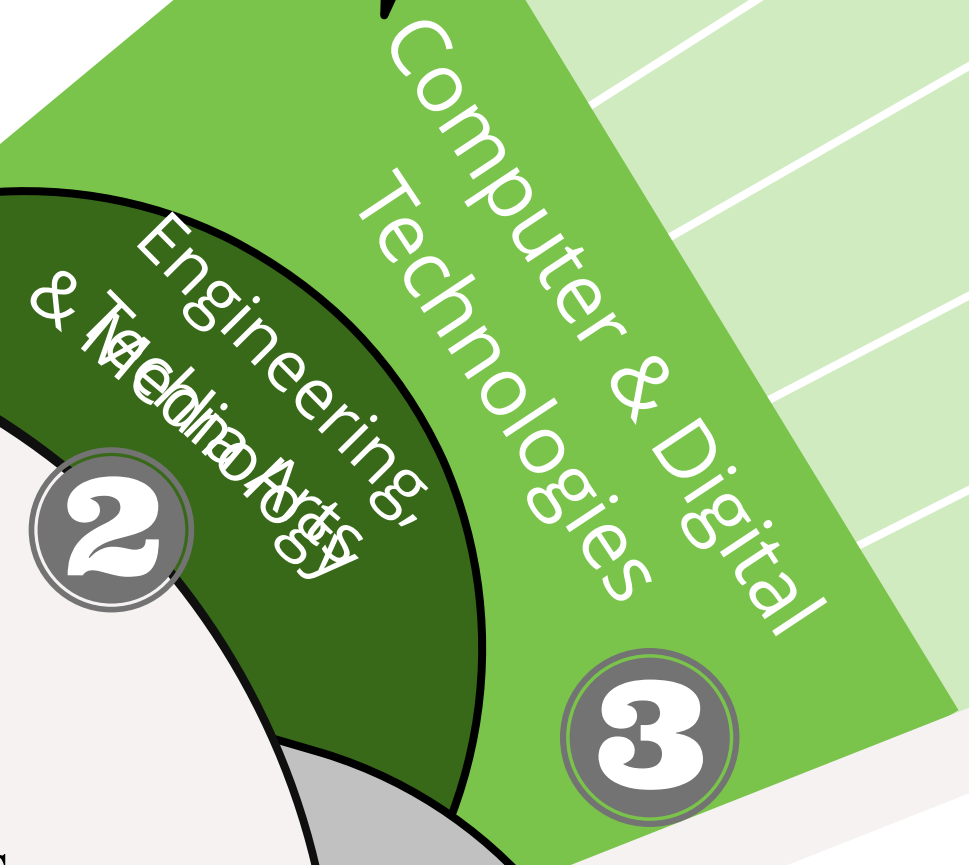
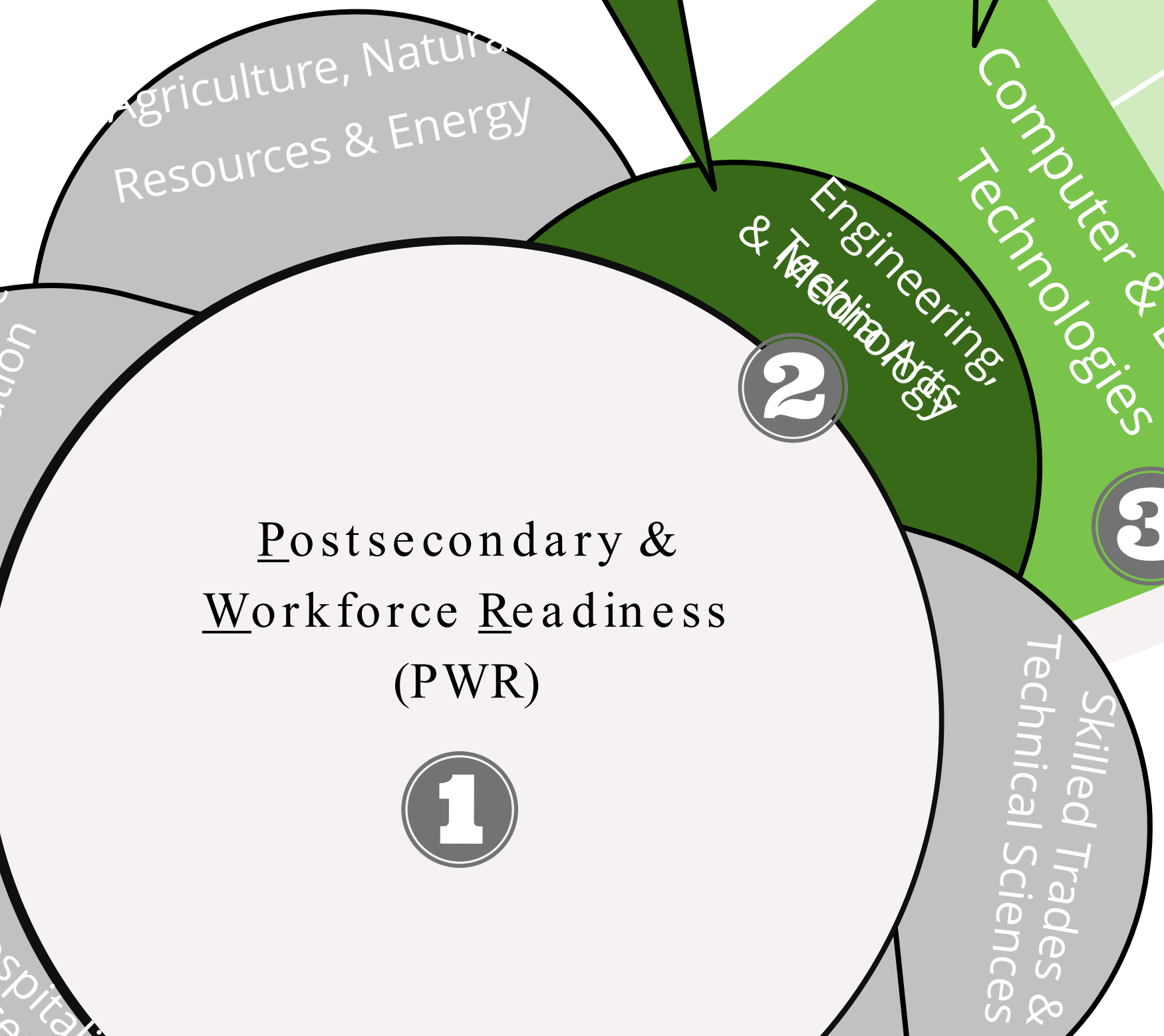
- ① [Essential Attitudes, Skills, Knowledge & Competencies for Success in the Real World](#)
- ② [Industry Area](#)
- ③ [Career Cluster](#)
- ④ [Career Pathways](#)
- ⑤ [Programs of Study](#)

Industry Area
Employment options to explore that are in high demand for a thriving Colorado economy.

Career Cluster
A way to group common skills into one category. When students identify with a cluster area, it helps plan courses, classes and future options.

Career Pathways
A way to show the path to complete a program, sequence of courses, in-school and out-of-school experiences, Work Based Learning and navigate life after high school.

Program of Study
A map to help students design their futures, know the sequences of courses to be intentional about building their class schedules, learn what next steps and what options exist during and after high school for thoughtful postsecondary and workforce readiness.



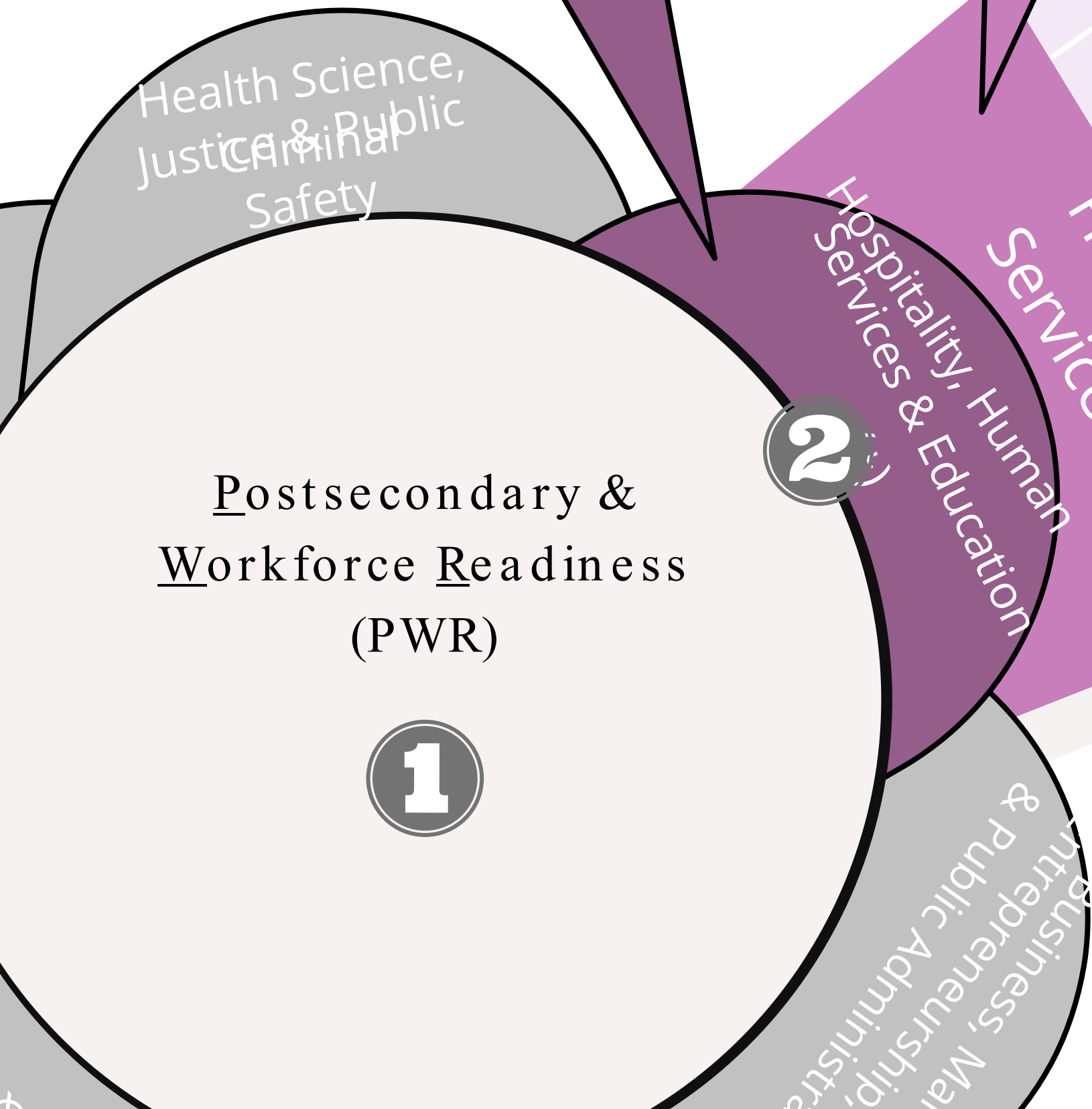
- 1 [Essential Attitudes, Skills, Knowledge & Competencies for Success in the Real World](#)
- 2 [Industry Area](#)
- 3 [Career Cluster](#)
- 4 [Career Pathways](#)
- 5 [Programs of Study](#)

Industry Area
Employment options to explore that are in high demand for a thriving Colorado economy.

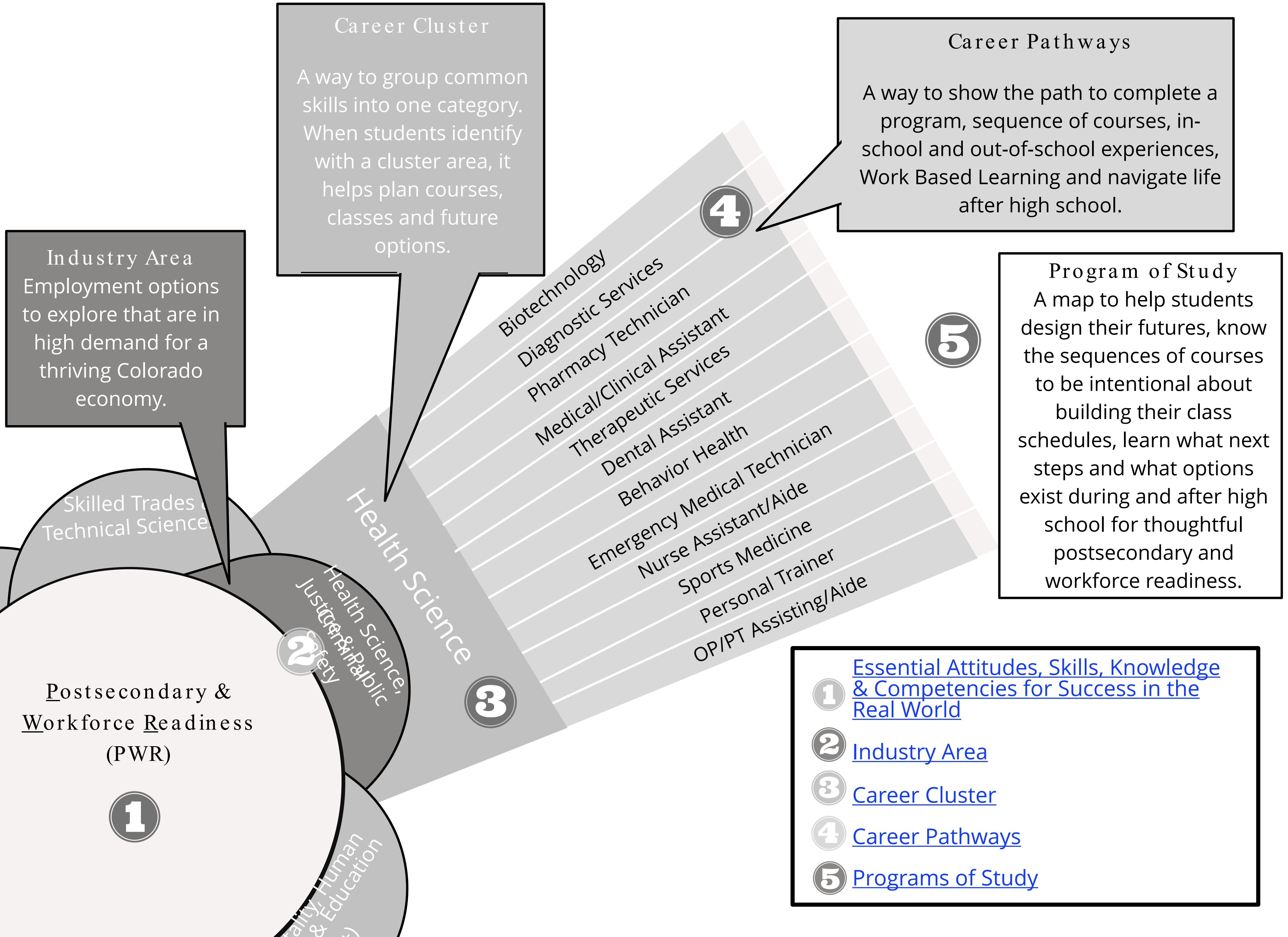
Career Cluster
A way to group common skills into one category. When students identify with a cluster area, it helps plan courses, classes and future options.

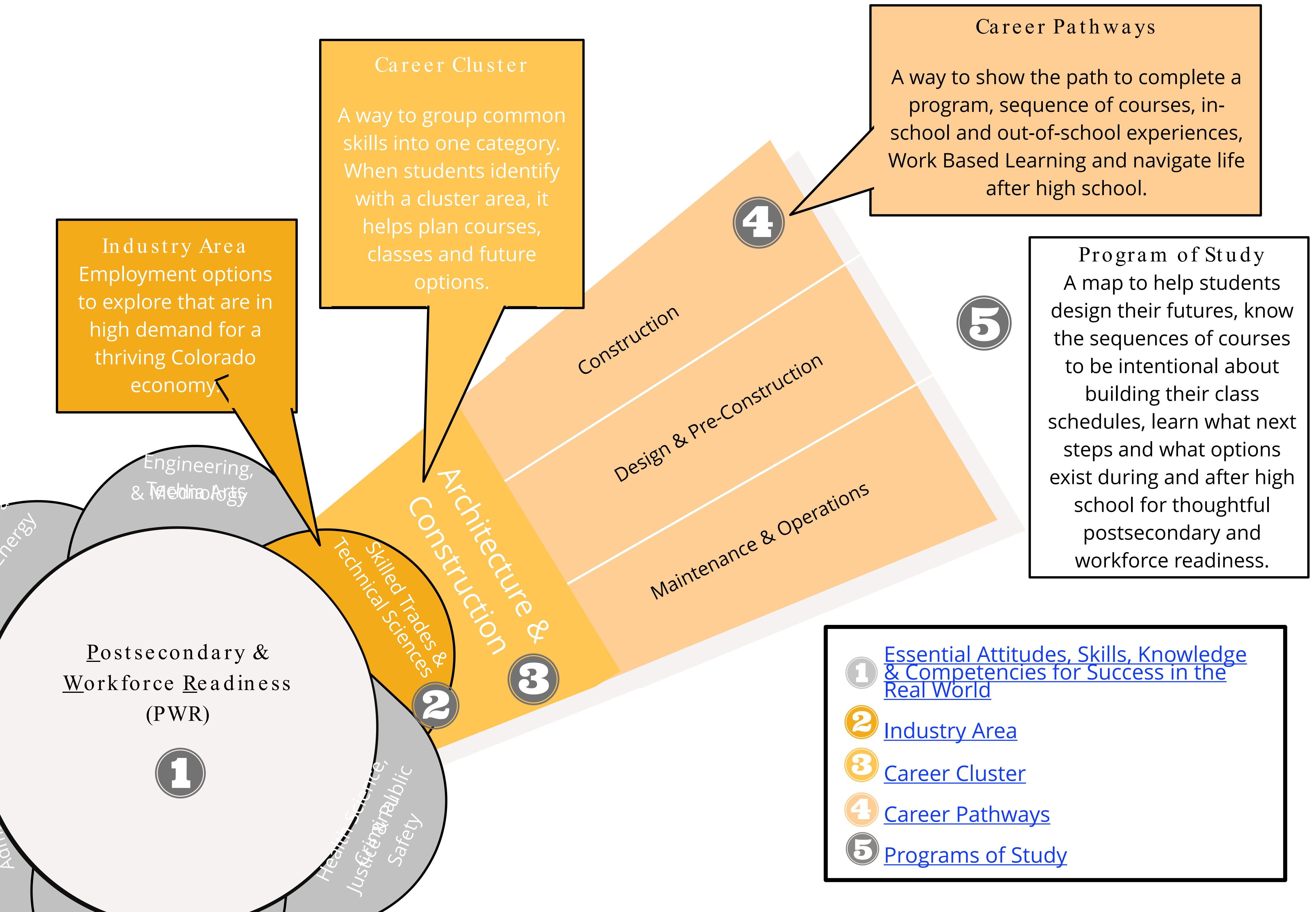
Career Pathways
A way to show the path to complete a program, sequence of courses, in-school and out-of-school experiences, Work Based Learning and navigate life after high school.

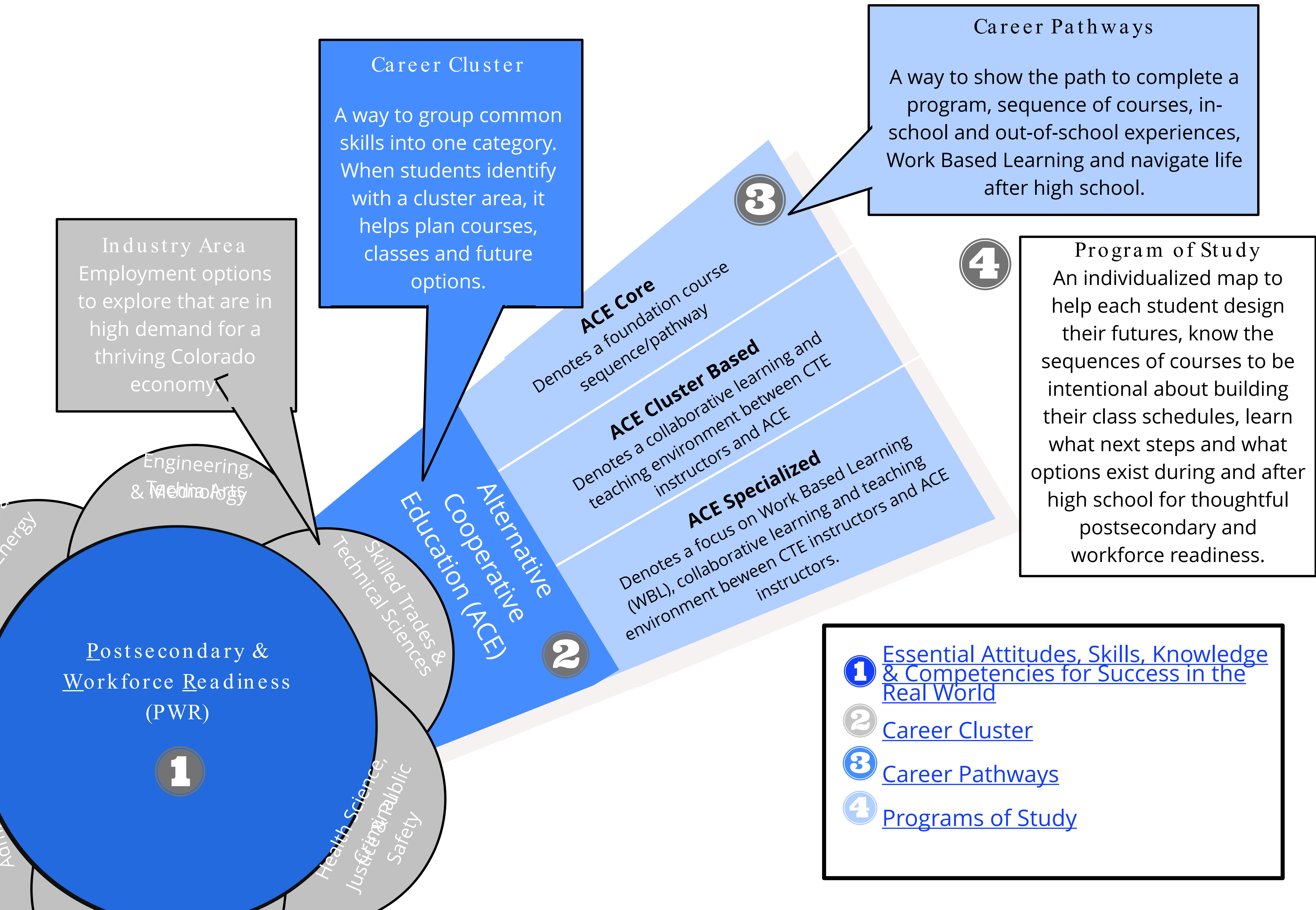
Program of Study
A map to help students design their futures, know the sequences of courses to be intentional about building their class schedules, learn what next steps and what options exist during and after high school for thoughtful postsecondary and workforce readiness.



- 1 [Essential Attitudes, Skills, Knowledge & Competencies for Success in the Real World](#)
- 2 [Industry Area](#)
- 3 [Career Cluster](#)
- 4 [Career Pathways](#)
- 5 [Programs of Study](#)







Industry Area
Employment options
to explore that are in
high demand for a
thriving Colorado
economy.

Career Cluster
A way to group common
skills into one category.
When students identify
with a cluster area, it
helps plan courses,
classes and future
options.

Career Pathways
A way to show the path to complete a
program, sequence of courses, in-
school and out-of-school experiences,
Work Based Learning and navigate life
after high school.

Program of Study
An individualized map to
help each student design
their futures, know the
sequences of courses to be
intentional about building
their class schedules, learn
what next steps and what
options exist during and after
high school for thoughtful
postsecondary and
workforce readiness.

- 1 [Essential Attitudes, Skills, Knowledge & Competencies for Success in the Real World](#)
- 2 [Career Cluster](#)
- 3 [Career Pathways](#)
- 4 [Programs of Study](#)

